

1 APRIL 2010 – 31 MARCH 2011

ANNUAL REPORT



Charities Commission
Registration No: **CC37494**

GST Number:
100 572 850



Web
Email
Phone
Fax
MHF HQ
Postal Address

www.mikahakafoundation.com
info@mikahakafoundation.com
+649 620 6111
+649 620 7443
111B May Road, Mt Roskill, Auckland 1041
PO Box 90-408, Auckland 1142



EXECUTIVE DIRECTOR'S REPORT

The last year has been defined by the devastating tragedy of major earthquakes in Christchurch and in Japan. MHF is actively participating in the response to both of these disasters through direct community involvement, performance and fundraising.

At home in Auckland, the Foundation's core Kā health and wellbeing initiatives continue to develop momentum and grow in exciting directions. The Kā In-Schools Programme is now well-established, countering New Zealand's worsening obesity and diabetes statistics by delivering free classes that encourage rangatahi to take charge of their own bodies, get up and go!

"Physical inactivity is second to smoking as a modifiable risk factor for poor health."

- Ministry of Health / Manatū Hauora, 2003

I have been particularly impressed with Kā Team Leader Jay Tewake's innovative Kā 400 programme. Initially conceived as an outreach initiative from the Kā In-Schools and Break-Away Holiday Programmes, Kā 400 has become its own cultural phenomenon – a youth movement with movement!

Much of this year was also spent developing partnerships and programming for the forthcoming Rugby World Cup. MHF will be integrating its performance and youth programmes in 2011 to present the AROHA Mardi Gras as a major event for the REAL NZ Festival.

Mika, MHF Kaitiaki/Executive Director



Mika with Kā 400 kids and MHF whānau

WHAKAPAPA | HISTORY

The Mika Haka Foundation (MHF) is a charitable trust formed to deliver the inclusive vision of successful Māori artist and entertainer, Mika, of an extraordinary future for all young New Zealanders – in particular, young people from diverse backgrounds and minority communities.

The Foundation was established in 2008 to consolidate and expand programmes that Mika established through the pioneering work of the Torotoro Trust between 2001 and 2008. MHF continues to develop these performance and physical activity based programmes to benefit greater numbers of young New Zealanders.

WHAKATAKANGA | MISSION

The Mika Haka Foundation exists to ignite young minds and transform bodies towards better lives through the performing arts and physical culture.



CHAIR'S REPORT

Since 2008, the Mika Haka Foundation (the Foundation) has consolidated its core programmes and strengthened relationships with strategic partners.

Central to the activities of the Foundation are the Kā programmes, which stem from the Kā in-schools programme. We are now taking Kā's healthy lifestyle kaupapa into the community through school holiday and outreach initiatives. The message is also being communicated through the high-rating *Kā Life* TV series on Māori Television.

The results of Ministry of Health research into the Kā In-Schools Programme are heartening, providing statistical support for the innumerable human success stories that the Foundation has observed. The impact on improved health and wellbeing for rangatahi and their whānau is invaluable, providing both short and long term benefits for the country as a whole.

The Foundation's artistic focus for 2011 is the development of the AROHA Mardi Gras for staging during Rugby World Cup 2011. Mika has been refining this major event for many months, skillfully rehearsing talent from the Foundation's own Emerging Leaders programme alongside cultural performance groups from across Auckland. In keeping with the Foundation's objectives, significant artistic experience is being gained by the performers and production team working towards this event.

The Emerging Leaders programme produced a range of rewarding outcomes this year, from exuberant performances and workshops to the *Rangatahi Tū Rangatira* music project and the highly effective digital launch of The Geeks. The artistic and professional development of high potential young performers is a logical extension from our active lifestyle programmes for youth, and one of the Foundation's most exciting growth areas.

Progress continues to be made in acquiring the support of key strategic partners and securing additional partnership agreements with both funding bodies and commercial sponsors. This success can be attributed to the indefatigable work of Mika. His work is characterised by a strong belief in the Foundation's core values and kaupapa.

Finally, I wish to thank our sponsors, supporters and staff, without whom the work of the Foundation would not be possible.

Dr. Pare Keiha, MHF Chair

KAUPAPA | ETHOS

The Mika Haka Foundation invites people of diverse ethnicities, cultures, sexualities and religions, living in Aotearoa/New Zealand, to find pathways towards better health and education opportunities through physical culture and the performing arts.

We aim to provide young people with direction and create an understanding of self-discipline and boundaries. Māori refer to this as Tikanga. This direction helps to empower young people to set goals and take responsibility for their own lives. We promote healthy living and always aim to lead by example.

We want to provide an environment of inspiration, encouraging dreams and the idea that nothing is impossible – to push yourself to new heights, to have no fear of failure and to be in a constant state of learning.

*Kotahitanga mā re Rerekētanga
Unity through Difference*

MĀTĀPONO | PRINCIPLES

Our work is guided by five Māori principles:

Whanaungatanga: We are collaborative in nature and believe that we are stronger together.

Mana Tangata: We take pride in ourselves, our work and our community. We believe that education and employment, combined with cultural, creative and physical wellbeing, will bring personal success.

Wehi: We want to ignite the minds of young people, encouraging them in their passions.

Tapu Takitahi: We believe in the sacred nature of the self. Being a leader to yourself first will allow you to lead others.

Manākitanga: We work together, care for one another, and respect each other.

MHF TEAM



Mika
Kaitiaki/Executive Director

Marc Conaco III
Designer/Administrator

Julian Cook
Communications/Funding

Janet Elliott
Bookkeeper

KĀ LIFE TEAM

Jay Tewake
Kā Team Leader

Dr. Mark James Hamilton
Kā Syllabus Advisor

Emily Woodfield
Kā Schools Intern

MHF EMERGING LEADERS

Amanda Ashton
Eru Bennett-Paul
Sonny Bishop
Rina Chae
Jermaine Leef
Amelia Lynch
Arahia Mackinven
Roberto Nascimento
Parai S Parai
Marino Taiatini
Kura Te Ua

MHF MUSIC UNIT

Penny Dodd
Musical Director

Mahina Kauī
Taonga Pūoro

Karl Moser, Tim Corin,
Michael Rush, Sonny Bishop
Studio Production Team

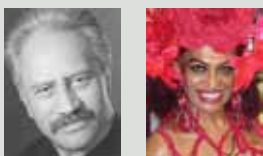
LEGAL & FINANCIAL TEAM

David McLaughlin, McLaughlin Law
Lawyer

Lynne Wilkins,
Bizworx Consultancy Limited
Accountant

John Mills, J&G Mills Financial Services
Auditor

KAUMĀTUA & KUIA



Ngamaru Raerino
Carmen Rupe

TRUST OBJECTIVES



Kā 400 kids with legendary All Black Tana Umaga

The purpose of the Mika Haka Foundation Charitable Trust is to support and encourage in various ways the development and discussion of, and public interaction with, different aspects of native cultures for the benefit of the native cultures and the wider community, and the addressing of various issues of benefit to native cultures and the wider community. In promoting this general purpose the Trust will, without limitation, also:

- provide support to native cultures working on projects that aim to bring about social change beneficial to themselves and the wider community;
- support, record and promote the dissemination of new thought on 'What is native culture to New Zealand?' and related issues;
- support, record and promote the Takataapui cultural history of Aotearoa and encourage the dissemination to the wider community of this information and knowledge;
- support, record and promote the ongoing development of all art forms from the perspective of native cultures for the benefit of such native cultures and the wider community;
- support and promote amongst the youth, events, activities, projects and discussion aimed at promoting native cultures working in unity for the benefit of the native cultures and the wider community; and
- support and promote amongst native cultures and the wider community a commitment to non-smoking, anti-violence, healthy living and positive life choices.

BOARD OF TRUSTEES



Associate Professor Pare Keiha
(Te Aitanga-a-Māhaki/Rongowhakaata)
MHF Chair
Tuamaki/Dean of Te Ara Poutama,
AUT University

Dr. Pare Keiha is a man of action as well as letters, with a background spanning both academic and commercial environments. Pare's career commitment is to Māori advancement through the mobilisation of cultural capital.



Jane Hunter
(Ngāpuhi/Ngāti Hine)
MHF Secretary/Treasurer
Executive Director, North Shore Hospital
Foundation

With extensive achievements in the health, entertainment and sporting sectors, Jane Hunter's current focus is on charitable support for health education and health promotion among youth. Kia tū kia māia whakapuawaitia ngā moemoeā.



Glenda Hughes
MHF Trustee
Managing Director, Glenda Hughes
Communications

Stop Press! Appointed as a trustee at the recent AGM, Glenda Hughes is a leading authority on creating and communicating a winning environment. Glenda has worked with the New Zealand Olympic Games Committee and many of our top athletes, so she knows first-hand what it takes

FUNDERS, SPONSORS & SUPPORTERS

APRA
ASB Community Trust
Asia New Zealand Foundation
Auckland Council
Auckland Council – Creative Communities
COGS
Erica Crawford
Barrie Ewens & Colin Waterhouse
Jenny Gibbs
Health Sponsorship Council – Auahi Kore
The ICEHOUSE
MAINZ

Te Māngai Pāho
Ministry of Health / Manatū Hauora
Ministry of Social Development
– Break-Away Holiday Activity Programme
NZ Lottery Grants Board
NZ Post – Community Post
Te Puni Kōkiri
South Pacific Water
Turners & Growers
Work and Income
Pātangaroa Entertainment

YEAR IN REVIEW

KEY EVENTS & ACTIVITIES FROM THIS YEAR INCLUDE:



THIS PAGE (L-R) DANZ magazine cover // Kā In-Schools Programme at Manurewa High School and Kā Holiday Programme at Manurewa Marae // Kā 400 Free Holiday Programme poster. OPPOSITE PAGE (L-R) TOA TOA 2010 poster // TOA TOA 2010 winners // Prime Minister John Key with Mika and The Geeks // Auckland Mayor Len Brown with Kā 400 kids // Kā 400 flash mob in Aotea Square // RRV1 Matariki poster // I Love ChCh fundraiser

KĀ IN-SCHOOLS PROGRAMME

Supported by the Ministry of Health /Manatū Hauora, Kā is a dance and physical activity based health and wellbeing programme implemented within schools. Kā is the Foundation's core youth programme and continues to be developed and strengthened for the future.

"It is a wonderful opportunity to bring in outside tutors to broaden the learning experience for both the students and the teachers. It is not often that low decile schools have the ability to access outside tutors, so having a programme like Kā available is great."

- Shaquelle Maybury, Manurewa High School

This year, the Kā Team delivered weekly classes in 17 schools: Aorere College, De La Salle College, Hato Petera College, Kelston Girls High School, Manurewa High School, Marist College, Massey High School, Mt Roskill Grammar School, One Tree Hill College, Otahuhu College, Papatoetoe High School, Selwyn College, Southern Cross Campus, Tamaki Ki Raro Trust, Tangaroa College, Te Kura Kaupapa Māori o Māngere and Te Kura Māori o Ngā Tapuwāe.

"...when I first came I wasn't that keen to participate and quite shy. But I've gained more confidence, and love to participate in it."

"I feel that I have built a stronger relationship bond between friends..."

- Ka Student Questionnaires

KĀ HOLIDAY PROGRAMMES

In June and January, MHF offered a series of free, dance-based Kā Break-Away Holiday Activity Programmes at Mika Studios and Manurewa Marae – as well as a screen performance focused programme at Auckland Museum as part of *I AM Making Movies*.

Kā classes were also delivered at Wesley Community Centre, Jambalaya Festival, Polyfest, Funfest, Waitakere Youth Day and I AM GI Day.

MHF will continue to develop and grow the Kā Break-Away Holiday Activity Programme at Manurewa Marae from April onwards.

KĀ LIFE TV

Pātangaroa Entertainment has developed the Kā concept into a healthy lifestyle TV programme for Māori Television.

Launched in August, the 26-part series teamed Mika and special guests with MHF's Kā Team and Emerging Leaders to create a must-see weekly hauora check for the whole whānau.

KĀ 400

Since January, Jay Tewake has been steadily growing the Kā School Holiday Programme into a full Kā outreach movement with up to 400 teenage rangatahi participating in weekly classes, rehearsals and social activities.

Launched with an afternoon performance at Auckland's Big Gay Out, Kā 400 developed across a series of fun flash-mobs, with a recruitment drive ahead of appearances around the coming Rugby World Cup.

TOA TOA 2010

The 6th annual TOA TOA New School Dance Champs at Mangere's Metro Theatre in November was a free competition where students took dance skills practised in the Kā In-Schools Programme and put them on stage.

This year's winners were ReSample Dance Crew (secondary division) and Lil Saintz Dance Crew (primary/intermediate division). The 2010 competition was filmed for Māori Television.

KĀ RESEARCH

In November, Dr. Mark James Hamilton (University of Canterbury) completed his Ph.D on new Māori and Indian dance, based around the pioneering work of the Totoro Trust that preceded the Mika Haka Foundation.

The Ministry of Health/Manatū Hauora has presented its research results from the first 18 months and 400 students to complete the Kā In-Schools Programme. The report evidences improved levels of physical activity and confidence among Kā programme participants, and highlights the programme's effectiveness in reaching Pacific and Māori students.



In February, Kā Schools Intern, Emily Woodfield, commenced a year-long study of the Kā programme for AUT University.

MHF WĀNANGA

In April, the Kā Team travelled to Kōkiri Marae in Wellington to train and gain certification to teach the traditional Māori game, Ki-o-Rahi. Ki-o-Rahi was subsequently added to the Kā repertoire, and a special Ki-o-Rahi segment was filmed for *Kā Life TV* at Tolaga Bay School in June.

In February, Creative Communities and APRA funded an inspirational and productive Taonga Pūoro Wānanga at Mika Studios with traditional Māori instrumentalist Mahina Kauī, Penny Dodd and the MHF Music Unit.

MHF EMERGING LEADERS

The new MHF Emerging Leaders programme created exciting opportunities across a variety of art forms and digital platforms for our next-generation dancers, singers, entertainers, producers and presenters.

Mika has been mentoring young performers for over a decade. This programme identifies individuals with leadership potential and assists them to develop their talent while creating opportunities for paid professional work within the creative sector.

The runaway success of the year was February's digital release of the *Māori Boy* video by JGeek and The Geeks, which made New Zealand music history by reaching 100,000 hits on YouTube in 10 days, and has since been viewed over 750,000 times.

The Foundation cemented a pro bono mentoring relationship for MHF Emerging Leaders with The ICEHOUSE, and The Geeks performed at a party to celebrate its *Forbes* magazine listing as one of the top ten incubators in the world.

Among the many performances and workshops for MHF Emerging Leaders throughout this year, standouts include the opening of New Zealand Fashion Week, LATE at the Museum, the End of School Summer Festival, and the AUT Chancellor's Dinner – plus two performances for Prime Minister John Key, at Orakei Marae and at the re-opening of Eden Park.

In December, MHF Emerging Leaders Marino Taiatini and Parai S Parai worked with the New Zealand Wheel Blacks to create a unique haka for the opening of the Attitude Awards.

RRV1 (RANGATAHI TŪ RANGATIRA, VOL. 1)

With Te Māngai Pāho support, the *RRV1 (Rangatahi Tū Rangatira, Vol. 1)* CD project enabled MHF Emerging Leaders and the MHF Music Unit to record and release a full album of original pop songs in te reo Māori and English.

RRV1 was launched at a special urban Māori performance and pop art showcase for Matariki, produced by Jay Teweake and MHF Emerging Leaders, The Geeks, at Metro Theatre in Mangere.

CHRISTCHURCH FUNDRAISERS

From September onwards, Mika and MHF Emerging Leaders were actively involved in fundraising for the people of Christchurch, including performances for the I Love ChCh Earthquake Relief Concert at TelstraClear Pacific Events Centre, the Christchurch Quake Fundraiser at the Viaduct Basin's Floating Pavilion, and several smaller events.

Mika will travel to Tokyo and Kyoto in April to participate in fundraising for the Japan Earthquake appeal.

MERATA MITA TRIBUTE

In a special performance at the WIFT NZ Awards (Women in Film and Television) in August, Mika and the Foundation honoured the life of Merata Mita who passed away suddenly in May.

Kua hinga te Tōtara o te wao nui a Tāne. Haere atu rā e te Rangatira, haere atu rā.

FINANCIAL STATEMENTS

AUDIT COMPLETED BY JOHN MILLS, J&G MILLS FINANCIAL SERVICES LTD,
FOR THE YEAR ENDED 31 MARCH 2011

Income Statement for the year ended 31 March 2011

	Notes	2011 Actual \$	2010 Actual \$
Income			
Donations		1,300	6,200
Event income		903	-
Grants & contracts	6	172,177	235,553
Interest received		341	115
Performance fees received		4,575	13,900
Programme advertising		-	7,250
Project income		60,556	47,369
Sponsorship		2,100	-
Studio & office hire		444	1,813
Total income		242,396	312,200
Expenditure			
Accountancy & bookkeeping fees		8,680	13,778
Advertising, promotion, marketing, design		20,456	31,014
Audit fees		1,050	1,200
Bank fees & charges		347	296
Event expenses		3,346	72,724
General administration expenses		7,993	3,401
Insurance		1,090	1,417
Legal fees		904	100
Professional development		3,182	200
Studio costs		8,727	2,935
Subcontractors		53,097	61,935
Travel & accommodation expenses		3,020	10,561
Wages & salaries		178,243	99,277
Total cash expenditure		290,135	298,838
Non-cash expenditure			
Depreciation	4	1,098	880
Total non-cash expenditure		1,098	880
Total expenses		291,233	299,718
Net operating surplus (deficit)		(48,837)	12,482

The attached notes form part of, and should be read in conjunction with these accounts.

Balance Sheet as at 31 March 2011

	Notes	2011 Actual \$	2010 Actual \$
Current assets			
Cash & Bank	5	76,909	45,303
Accounts Receivable		3,868	44,369
GST Accrued		-	-
Total Current Assets		80,777	89,672
Current Liabilities			
Accounts Payable	2	21,192	83,843
Income Received in Advance	7	84,097	4,800
GST Accrued		3,730	55
Loan	3	20,000	-
Total Current Liabilities		129,019	88,698
Working Capital		(48,242)	974
Non-Current Assets			
Property, Plant & Equipment	4	3,284	2,905
Total Non-Current Assets		3,284	2,905
Net Assets (Liabilities)		(44,958)	3,879

The attached notes form part of, and should be read in conjunction with these accounts.

MIKA HAKA FOUNDATION CHARITABLE TRUST

Notes to the Accounts for the year ended 31 March 2011

1. STATEMENT OF ACCOUNTING POLICIES

Reporting Entity

These financial statements are for Mika Haka Foundation Charitable Trust.

Mika Haka Foundation Charitable Trust is a Charitable Trust, incorporated on 20th July 2008 under the Charitable Trusts Act 1957, and registered by the Charities Commission on 9th February 2009. The financial statements of Mika Haka Foundation Charitable Trust have been prepared according to generally accepted accounting practice.

Measurement Base

The accounting principles recognised as appropriate for the measurement and reporting of financial performance and financial position on a historical cost basis are followed by Mika Haka Foundation Charitable Trust.

These financial statements have been prepared in accordance with generally accepted accounting practice in New Zealand. For this purpose Mika Haka Foundation Charitable Trust has designated itself as a public benefit entity.

The information is presented in New Zealand dollars.

Specific Accounting Policies

The following specific accounting policies that materially affect the measurement of financial performance and the financial position have been applied.

(a) Revenue

Income from the sale of products and services is recognised when it is received or falls due. Fund-raising and unconditional donations or koha are recognised when received. Grants received are recognised in operating revenue, unless specific conditions attach to a grant and repayment of the grant is required where these conditions are not met. In these cases, the grant is treated as a liability until the conditions are met.

(b) Accounts Receivable

Accounts Receivable are stated at their anticipated realisable value.

(c) Income Tax

Mika Haka Foundation Charitable Trust is a Charitable Trust, and is therefore not subject to Income Tax.

(d) Property, Plant & Equipment

Property, plant and equipment are recorded at cost less accumulated depreciation.

(e) Depreciation

Depreciation has been calculated to allocate the cost or valuation of assets over their estimated useful lives, at the following rates:

Furniture, Fixtures, Fittings, Equipment	7.8% – 36.0% SL
--	-----------------

MIKA HAKA FOUNDATION CHARITABLE TRUST

Notes to the Accounts for the year ended 31 March 2011

(f) Goods and Services Tax (GST)

The financial statements have been prepared on a GST exclusive basis.

(g) Financial Instruments

Financial instruments in the statement of financial position include cash balances, receivables and payables.

(h) Differential Reporting

The Trust qualifies for differential reporting as it is not publicly accountable, and is not large as defined in the Framework for Differential Reporting. Mika Haka Foundation Charitable Trust has taken advantage of all available differential reporting exemptions.

(i) Changes in Accounting Policies

There have been no changes in accounting policies during the year. Policies have been applied on a basis consistent with the previous year.

Notes to the Accounts
for the year ended 31 March 2011

	2011 Actual \$	2010 Actual \$																								
2 Accounts Payable																										
Trade Creditors	488	66,250																								
Accruals	2,703	2,475																								
Payroll Liabilities	1,485	5,938																								
Related Party	16,516	9,180																								
	21,192	83,843																								
3 Loan																										
Mika X	20,000	0																								
	20,000	0																								
Mika X the settlor of the trust has made an advance to the Trust which is unsecured and on call at an interest rate of 0%.																										
4 Property, Plant & Equipment																										
	<table border="1"> <thead> <tr> <th colspan="3">2011</th> <th colspan="3">2010</th> </tr> <tr> <th>Cost/ Value</th> <th>Accum Depn</th> <th>Book Value</th> <th>Cost/ Value</th> <th>Accum Depn</th> <th>Book Value</th> </tr> </thead> <tbody> <tr> <td>5,277</td> <td>1,993</td> <td>3,284</td> <td>3,800</td> <td>895</td> <td>2,905</td> </tr> <tr> <td>5,277</td> <td>1,993</td> <td>3,284</td> <td>3,800</td> <td>895</td> <td>2,905</td> </tr> </tbody> </table>	2011			2010			Cost/ Value	Accum Depn	Book Value	Cost/ Value	Accum Depn	Book Value	5,277	1,993	3,284	3,800	895	2,905	5,277	1,993	3,284	3,800	895	2,905	
2011			2010																							
Cost/ Value	Accum Depn	Book Value	Cost/ Value	Accum Depn	Book Value																					
5,277	1,993	3,284	3,800	895	2,905																					
5,277	1,993	3,284	3,800	895	2,905																					
Furniture, Fixtures, Fittings, Plant, Equipment																										
Reconciliation of Net Book Value																										
Net book value at 1 January	2,905	887																								
Assets disposed of	0	0																								
Depreciation charge for year	(1,098)	(880)																								
Asset acquisition at cost	1,477	2,898																								
Net book value at 31 December	3,284	2,905																								
Depreciation																										
Furniture, Fixtures, Fittings, Plant, Equipment	1,098	880																								
	1,098	880																								
5 Cash & Bank																										
Bank of New Zealand Cheque Account	36,148	23,997																								
Bank of New Zealand Savings Account	32,755	15,052																								
Bank of New Zealand Savings Account	0	1,252																								
Bank of New Zealand Savings Account	8,006	5,002																								
	76,909	45,303																								
6 Grants & Contracts																										
APRA NZ	1,500	2,000																								
ASB Community Trust	30,000	0																								
Creative NZ	0	30,000																								
Auckland City Council Creative Communities	4,200	15,646																								
Internal Affairs Department	4,600	3,363																								
Asia New Zealand Foundation	1,500	5,500																								
Auckland Museum	0	5,000																								
Health Sponsorship Council (received \$8000)	8,000	0																								
JR McKenzie Trust	0	24,000																								
Manukau City Council	20,000	0																								
Ministry of Social Development	96,474	98,841																								
New Zealand Aids Foundation	0	9,778																								
NZ Lottery Board	30,000	30,000																								
Te Puni Kōwhiri	60,000	0																								
The Karangahape Road Business Association	0	10,000																								
Timaru District Council	0	932																								
XNTRIK	0	493																								
	256,274	235,553																								

Notes to the Accounts
for the year ended 31 March 2011

	2011 Actual \$	2010 Actual \$
7 Income Received in Advance		
ASB Community Trust	26,145	0
Creative NZ	0	0
Auckland City Council Creative Communities	0	4,800
Internal Affairs Department	0	0
Asia New Zealand Foundation	1,500	0
Auckland Museum	0	0
Health Sponsorship Council (received \$8000)	8,000	0
JR McKenzie Trust	0	0
Manukau City Council	10,000	0
Ministry of Social Development	9,975	0
New Zealand Aids Foundation	0	0
NZ Lottery Board	28,477	0
	84,097	4,800
<i>Grants & contracts income exclude income that has been received but not yet spent or committed as at 31st March. Unspent income is reported in the Balance Sheet. All funds held are expected to be spent by the December 2011.</i>		
8 Related Party Transactions		
Mika X was a founding trustee of the Mika Haka Foundation Charitable Trust until 31 October 2008.		
The trust pays Patangaroa Entertainment Limited for the use of premises and facilities such as electricity, telephone, and internet. Mika X is a director of Patangaroa Entertainment Limited. Charges are based on reimbursement of cost.		
9 Capital Expenditure Commitments		
There were no commitments for capital expenditure at 31st March 2011. (2010: Nil)		
10 Contingent Losses or Gains		
There were no known contingent losses or gains outstanding as at 31st March 2011 (2010: Nil)		
9 Statement of Uncommitted Funds		
<i>At balance date the following funds were available:</i>		
Bank of New Zealand Cheque Account	36,148	23,997
Bank of New Zealand Savings Account	32,755	15,052
Bank of New Zealand Savings Account	0	1,252
Bank of New Zealand Savings Account	8,006	5,002
Accounts Receivable	3,668	44,369
	80,777	89,672
<i>To meet the following commitments:</i>		
Accounts Payable	21,192	83,843
Income Received in Advance	84,097	4,800
GST Accrued	3,730	55
Loan	20,000	0
Asset Replacement	0	895
	129,019	89,593
Net uncommitted funds	(48,242)	79

INDEPENDENT AUDITOR'S REPORT

To The Members of
Mika Haka Foundation Charitable Trust

Report on the Financial Statements

I have audited the financial statements of Mika Haka Foundation Charitable Trust on pages 1 to 9, which comprise the balance sheet as at March 31st, 2011, and the income statement and statement of changes in equity for the year ended, and a summary of significant accounting policies and other explanatory information.

Trustee's Responsibility for the Financial Statements

The trustee's are responsible for the preparation and fair presentation of these financial statements in accordance with generally accepted accounting practice in New Zealand and for such internal control as the Trustee's determine is necessary to enable the preparation of financial statements that are free from material misstatement, whether due to fraud or error.

Auditor's Responsibility

It is my responsibility to express an independent opinion on the financial report presented by the Committee and report my opinion to you.

Basis of Opinion

My responsibility is to express an opinion on those financial statements based on my audit conducted in accordance with International Standards on Auditing (New Zealand). Those standards require that I comply with ethical requirements and plan and perform the audit to obtain reasonable assurance about whether the financial statements are free from material misstatement.

An Audit involves performing procedures to obtain audit evidence about the amounts and disclosures in the financial statements. The procedures selected depend on the auditor's judgement, including the assessment of risks of material misstatement of the financial statements, whether due to fraud or error. In making those risk assessments, the auditor considers internal control relevant to the entity's preparation and presentation of the financial statements in order to design audit procedures that are appropriate in the circumstances, but not for the purpose of expressing an opinion on the effectiveness of the entity's internal control. An audit also includes evaluating the appropriateness of accounting policies used and the reasonableness of accounting estimates, as well as evaluation of the overall presentation of the financial statements.

54 Wentworth Drive, Rotorua North, Hamilton 3210, New Zealand

Phone: +64-7-5720054

A/H Phone: +64-7-854 3945 Fax: +64-7-854-3746

Email: jmills@clear.net.nz or jmil@clear.net.nz

Page 2

I believe that the audit evidence I have obtained is sufficient and appropriate to provide a basis for my audit opinion

Other than in my capacity as auditor I have no relationship with or interests in Mika Haka Foundation Charitable trust.

Opinion

In my opinion, the financial statements on pages 1 to 9 present fairly, in all material respects the financial position of Mika Haka Foundation Charitable Trust as at March 31st, 2011, and its financial performance for the year ended in accordance with generally accepted accounting practice in New Zealand.

My audit report was completed on Saturday, July 30, 2011 and my unqualified opinion is expressed as at that date

JOHN MILLS, C.A.

Director

Email: jmil@clear.net.nz

Saturday, July 30, 2011

THE FUTURE: 2011/2012

For the year ahead, the Foundation has two major focuses – the effective delivery of its Kā programme in schools, school holiday and outreach programmes, and the successful presentation of the AROHA Mardi Gras as a major event for the REAL NZ Festival, and also a TV special for Māori Television.

Moving into 2012, MHF will continue to develop existing work and annual projects, consolidating its programmes into two main areas – Arts/Development and Youth/Health.

2012/2013 arts programmes will be pitched towards the fast-growing MHF Emerging Leaders programme, with moving image and music projects already in development. The Kā programme strands will make the Foundation's core youth programme strong and sustainable for the future.



MIKA'S AROHA MARDI GRAS

In April 2010, Mika and the MHF crew commenced work on creating a distinctly 21st Century Māori experience for the coming Rugby World Cup. Hundreds of performers have been rehearsing since January at Mika Studios and Manurewa Marae for this showcase of music and dance, art and fashion, burlesque and multicultural performance.

AROHA Mardi Gras is a magical celebration of Auckland City colour and

diversity that combines the myriad of cultures that now call Aotearoa home – Japanese Taiko drummers, Polynesian dancers, Bollywood performers, belly dancers, and show-stopping Takataapui and Fa'afafine performers – with traditional and techno-inspired Māori kapa haka crews.

The multicultural carnival event also features popular soul and reggae singers, award-winning actors and personalities,

a fashion show from contemporary korowai designer Kiri Nathan, Kā 400 flash-mobs, and the mighty Te Tai Tonga kapa haka group.

A free event for the whole whānau, Mika's AROHA Mardi Gras is scheduled for Friday 23 September at Takutai Square in Auckland's Britomart Precinct as part of the REAL New Zealand Festival.

